



The Global Language of Business

Debit Credit Advice Business Message Standard (BMS)

Release 3.4.1, Draft, Nov 2019



Document Summary

Document Item	Current Value
Document Name	Debit Credit Advice Business Message Standard (BMS)
Document Date	Nov 2019
Document Version	3.4.1
Document Issue	1
Document Status	Draft

Work Request Reference

Date of WR Submission to GSMP:	WR Submitter(s):	Refer to Work Request (WR) Number(s):
20 -Ag-2008	GS1 Global Office	08-000209
22-Oct-2007	GS1 Australia	07-000359
15-Nov-2006	GS1 Australia	06-000283
19-Nov-2006	GS1 Australia	06-000303
17-Dec-2006	GS1 Australia	06-000334
7-Feb-2014	GS1 Germany	14-000021
20-Mar-2014	GS1 Slovenia	14-000044
25-Jun-2014	GS1 GO	14-000110
12-Jul-2016	GS1 GO	16-000340
03-Oct-2018	GS1 GO	18-000319

Business Requirements Document (BRAD) Reference

BRAD Title	BRAD Issue Date	BRAD Version
Debit Credit Advice Enhancements	11-Jan-2007	Version 0.0.1
Common Library	Dec 2008	BMS Release Version 2.5.0
BRD Debit or Credit Advice	17-Apr-2004	Version 1.1

Document Change History

Date of Change	Version	Changed By	Reason for Change	Summary of Change
12-Jan-2012	BMS 3.0 – Issue 1	Mark Van Eeghem	BMS Release 3.0	See summary of changes
01-May-2013	BMS 3.1 – Issue 1	Coen Janssen	BMS Release 3.1	See summary of changes
15-Sep-2014	BMS 3.2 – Issue 1	Ewa Iwicka	BMS Release 3.2	See summary of changes
01-Mar-2017	BMS 3.3 – Issue 1	Ewa Iwicka	BMS Release 3.3	See summary of changes



Date of Change	Version	Changed By	Reason for Change	Summary of Change
15-Oct-2018	BMS 3.4 – Draft for community review	Ewa Iwicka	BMS Release 3.4	See summary of changes
08-Nov-2019	BMS 3.4.1 – Issue 1	Radhika Chauhan	BMS Release 3.4.1	See summary of changes

Disclaimer

GS1®, under its IP Policy, seeks to avoid uncertainty regarding intellectual property claims by requiring the participants in the Work Group that developed this **Debit Credit Advice Business Message Standard (BMS)** to agree to grant to GS1 members a royalty-free licence or a RAND licence to Necessary Claims, as that term is defined in the GS1 IP Policy. Furthermore, attention is drawn to the possibility that an implementation of one or more features of this Specification may be the subject of a patent or other intellectual property right that does not involve a Necessary Claim. Any such patent or other intellectual property right is not subject to the licencing obligations of GS1. Moreover, the agreement to grant licences provided under the GS1 IP Policy does not include IP rights and any claims of third parties who were not participants in the Work Group.

Accordingly, GS1 recommends that any organization developing an implementation designed to be in conformance with this Specification should determine whether there are any patents that may encompass a specific implementation that the organisation is developing in compliance with the Specification and whether a licence under a patent or other intellectual property right is needed. Such a determination of a need for licencing should be made in view of the details of the specific system designed by the organisation in consultation with their own patent counsel.

THIS DOCUMENT IS PROVIDED "AS IS" WITH NO WARRANTIES WHATSOEVER, INCLUDING ANY WARRANTY OF MERCHANTABILITY, NONINFRINGEMENT, FITNESS FOR PARTICULAR PURPOSE, OR ANY WARRANTY OTHERWISE ARISING OUT OF THIS SPECIFICATION. GS1 disclaims all liability for any damages arising from use or misuse of this Standard, whether special, indirect, consequential, or compensatory damages, and including liability for infringement of any intellectual property rights, relating to use of information in or reliance upon this document.

GS1 retains the right to make changes to this document at any time, without notice. GS1 makes no warranty for the use of this document and assumes no responsibility for any errors which may appear in the document, nor does it make a commitment to update the information contained herein.

GS1 and the GS1 logo are registered trademarks of GS1 AISBL.

Table of Contents

1	Business Domain View	5
1.1	Introduction	5
1.2	References	5
2	Business Context	5
3	Business Transaction View	5
3.1	Debit or Credit Advice.....	5
4	Business Information View	8
4.1	Debit Credit Advice.....	8
4.2	Debit Credit Advice Line Item	11
4.3	Enumerations (message specific)	14
4.3.1	ClaimsNotificationTypeEnumeration.....	14
4.4	Code Lists	14
5	Business Message Examples	15
6	Implementation Considerations	16
6.1	User Guide	16
6.2	Message Specific Considerations	16
7	Summary of Changes	17
7.1	BMS Release 3.0	17
7.2	BMS Release 3.1	17
7.3	BMS Release 3.2	17
7.4	BMS Release 3.3	18
7.5	BMS Release 3.4	19
7.6	BMS Release 3.4.1	19
8	Appendices	19
9	Acknowledgements	19
9.1	Work Group.....	19
9.2	Development Team Members.....	21

1 Business Domain View

1.1 Introduction

Message Definition

The Debit Credit Advice message provides an electronic advice to a trading partner that a monetary adjustment - debit or credit amount value - is being applied to the purchase of goods or services, resulting in a change to the monetary amount owed/due between the parties.

Principles

Claims Notification may be used in situations such as (but not limited to):

- goods being received damaged
- incorrect quantity of goods are received
- retroactive volume discounts

Result in the need for one party to notify the other trading party that an adjustment is being applied, resulting in a change to the monetary amount owed/due between the parties.

For tax reasons the seller may need to issue a credit invoice to formally communicate the change including related taxes.

1.2 References

Reference Number	Reference Name	Description
[Ref1]	Debit Credit Advice Enhancements	Version 0.0.1
[Ref2]	BMS eCom Domain Common Library	BMS Release Version 3.2
[Ref3]	BMS Shared Common Library	BMS Release Version 3.2
[Ref4]	BRD Debit or Credit Advice	BRD Version 1.1
[Ref 5/ 8957]	BRAD Debit or Credit Advice Enhancement	BRAD Version 0.0.1

2 Business Context

Context Category	Value(s)
Industry	All
Geopolitical	All
Product	All
Process	Pay
System Capabilities	GS1 System
Official Constraints	None

3 Business Transaction View

3.1 Debit or Credit Advice

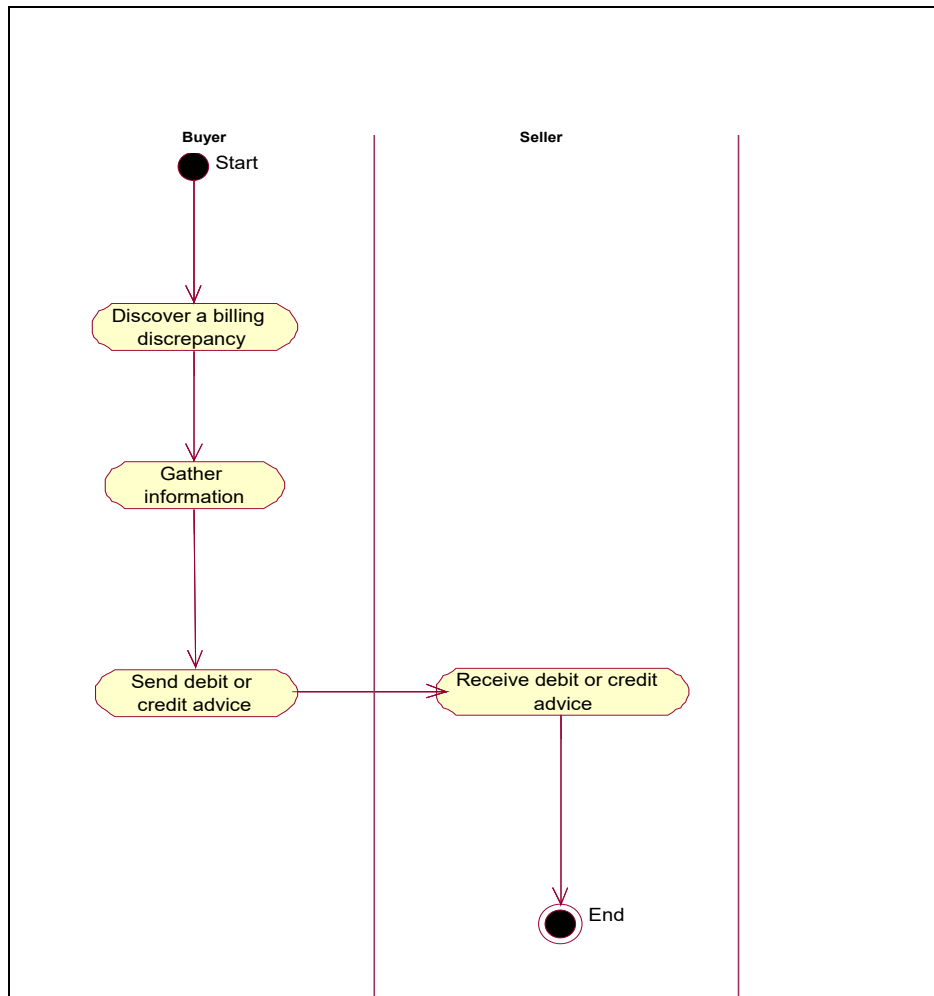
Use Case Diagram

Not Applicable

Use Case Description

Use Case ID	UC-1												
Use Case Name	Debit or Credit Advice												
Use Case Description	Buyer or Seller discovers a discrepancy or needs to advise a trading party regarding one or more adjustments related to item(s) or service(s) previously traded.												
Actors (Goal)	The two general actors in the 'Debit Or Credit Advice' process are the Buyer and the Seller. Depending on the specific nature of the relationship, other players may have a role, such as a third party. A defined third party for this message may be a Carrier, who may have a relationship with the Buyer or Seller, or both.												
Performance Goals	None												
Preconditions	The Buyer and Seller have an established relationship, and have entered into an agreement for the trade of goods or services, which have defined terms and conditions for the trade.												
Post conditions	None												
Scenario	<p>Begins when...</p> <p>The Buyer or Seller discovers a discrepancy or needs to advise the other trading party regarding adjustments related to item(s) or service(s) on previously traded information.</p> <p>Continues with...</p> <table border="1" data-bbox="454 846 1460 1070"> <thead> <tr> <th>Step #</th> <th>Actor</th> <th>Activity Step</th> </tr> </thead> <tbody> <tr> <td>1</td> <td>Buyer or Seller</td> <td>Discovers a discrepancy on previously traded information regarding goods or services.</td> </tr> <tr> <td>2</td> <td>Buyer or Seller</td> <td>Gathers the information necessary to properly give information detail to trading partner.</td> </tr> <tr> <td>3</td> <td>Buyer or Seller</td> <td>Issues appropriate Debit or Credit Advice document.</td> </tr> </tbody> </table> <p>Ends when... the Buyer or Seller issues a Debit Or Credit Advice to rectify previous transactional information, which is received by the affected party.</p>	Step #	Actor	Activity Step	1	Buyer or Seller	Discovers a discrepancy on previously traded information regarding goods or services.	2	Buyer or Seller	Gathers the information necessary to properly give information detail to trading partner.	3	Buyer or Seller	Issues appropriate Debit or Credit Advice document.
Step #	Actor	Activity Step											
1	Buyer or Seller	Discovers a discrepancy on previously traded information regarding goods or services.											
2	Buyer or Seller	Gathers the information necessary to properly give information detail to trading partner.											
3	Buyer or Seller	Issues appropriate Debit or Credit Advice document.											
Alternative Scenario	No Alternative Scenario												
Related Requirements	No Related Requirements												
Related Rules	No Related Rules												

Activity Diagram



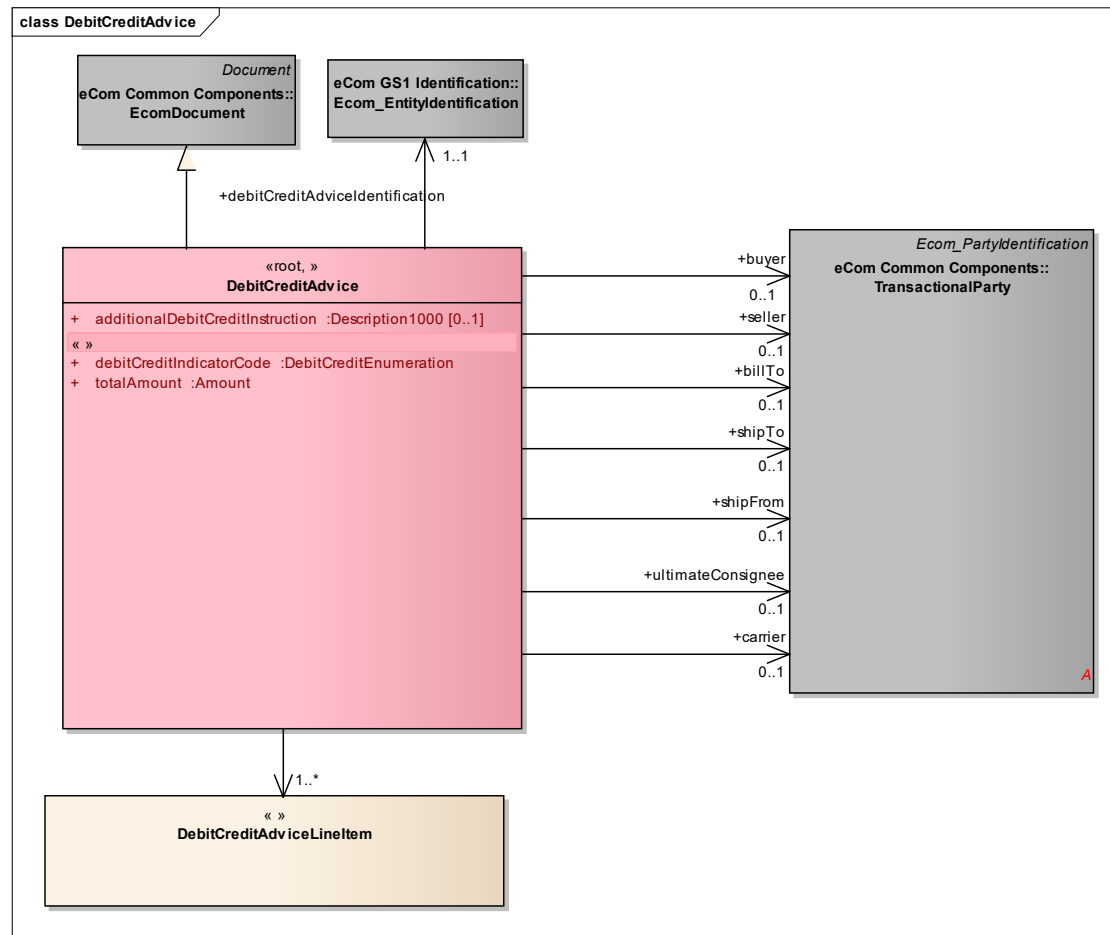
Sequence Diagram

Not Applicable

4 Business Information View

4.1 Debit Credit Advice

Class diagram



GDD report

The content of the DebitCreditAdvice class, its structure and component definitions can be accessed in the Global Data Dictionary:

http://apps.gs1.org/GDD/bms/Version3_4/Pages/bieDetails.aspx?semanticURN=urn:gs1:gdd:bie:DebitCreditAdvice

Content	Attribute / Role	Datatype /Secondary class	Multiplicity	Definition	Requirements
DebitCreditAdvice				The goal of the 'Debit Credit Advice' is to provide an electronic advice to a trading partner that a monetary adjustment - debit or credit amount value - is being applied to the purchase of goods or services, resulting in a change to the monetary amount owed/due between the parties.	
Association	seller	TransactionalParty	0..1	Identifies the party which sells products or services to a buyer.	
Association	carrier	TransactionalParty	0..1	Unique identifier for the company which physically transports goods from one place to another.	
Generalization		EcomDocument		Basic information about the content of the message including version number, creation date and time.	
Association		DebitCreditAdviceLineItem	1..*	Provides the Debit Credit Advice Line Item details.	
Association	buyer	TransactionalParty	0..1	Identifies the party to which products or services are sold.	
Association	billTo	TransactionalParty	0..1	Identifies the party which receives the invoice for the sold goods / services.	
Association	shipTo	TransactionalParty	0..1	Identifies the destination location to which goods are shipped.	
Association	shipFrom	TransactionalParty	0..1	Identifies the origin location from which goods are shipped.	
Association	ultimateConsignee	TransactionalParty	0..1	Identifies the final destination location to which goods are shipped.	
Association	debitCreditAdviceIdentification	Ecom_EntityIdentification	1..1	A unique identifier for the debit credit advice message.	



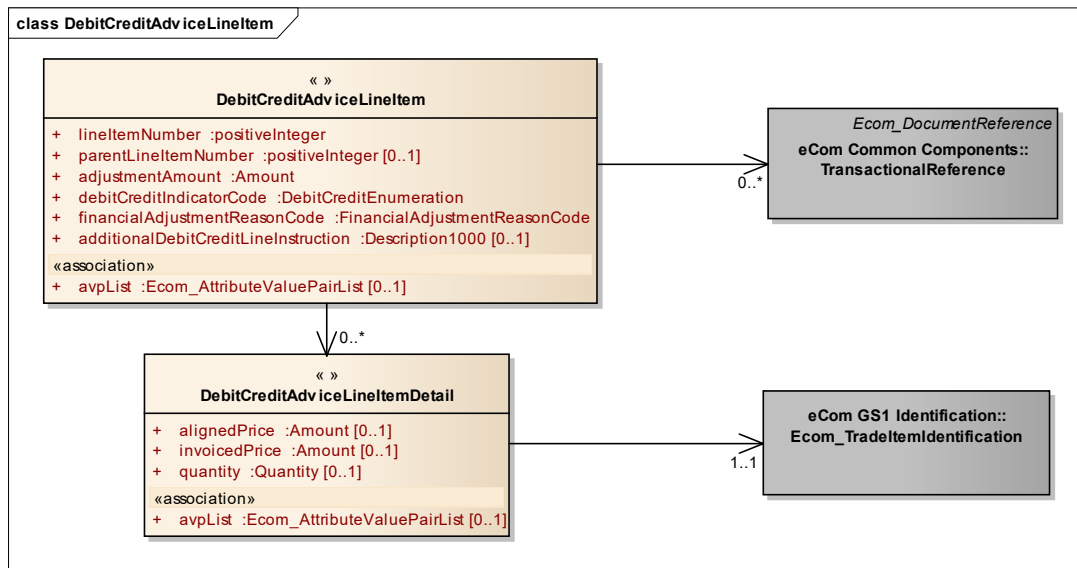
Content	Attribute / Role	Datatype /Secondary class	Multiplicity	Definition	Requirements
Attribute	debitCreditIndicatorCode	DebitCreditEnumeration	1..1	Code specifying whether the total amount is debit or credit.	
Attribute	totalAmount	Amount	1..1	Monetary amount of debit or credit.	renamed from amount
Attribute	additionalDebitCreditInstruction	Description1000	0..1	Comments related to message header level. This field should only be used in exception circumstances if the information cannot be codified. Examples of free text field: Faulty products taken by sales representative, items disposed of (not returned).	



Note: Reference Shared Common Library Business Message (BMS) Release 3.4 and eCom Domain Common Library Business Message (BMS) Release 3.4 for all common information.

4.2 Debit Credit Advice Line Item

Class Diagram



GDD Report

The content of the DebitCreditAdviceLineItem class, its structure and component definitions can be accessed in the Global Data Dictionary: http://apps.gs1.org/GDD/bms/Version3_4/Pages/bieDetails.aspx?semanticURN=urn:gs1:gdd:bie:DebitCreditAdviceLineItem

Content	Attribute / Role	Datatype /Secondary class	Multiplicity	Definition	Requirements
DebitCreditAdviceLineItem				Provides the Debit Credit Advice Line Item details.	
Association		TransactionalReference	0..*		
Association		DebitCreditAdviceLineItemDetail	0..*	Allows a sender to provide information of multiple adjustments to a line item from the same referenced document.	



Content	Attribute / Role	Datatype /Secondary class	Multiplicity	Definition	Requirements
Attribute	lineItemNumber	positiveInteger	1..1	Provides the line number associated to the Debit Credit Advice Line Item.	
Attribute	adjustmentAmount	Amount	1..1	Monetary amount of debit or credit adjustment.	
Attribute	debitCreditIndicatorCode	DebitCreditEnumeration	1..1	Indicator Value indicates whether the adjustment amount is a debit or credit.	
Attribute	financialAdjustmentReasonCode	FinancialAdjustmentReasonCode	1..1	Code specifying the reason for the financial adjustment.	renamed from messageReason
Attribute	additionalDebitCreditLineInstruction	Description1000	0..1	Comments related to the line level.This field should only be used in exception circumstances if the information cannot be codified. Examples :Aerosol doesn't work /Seeds have passed expiry date /Return due to customer dissatisfaction.	
Attribute	parentLineItemNumber	positiveInteger	0..1	The number of line item containing information about the parent of the current item. It allows establishing hierarchical link between the two items.	
Attribute	avpList	Ecom_AttributeValuePairList	0..1	Temporary attributes introduced between minor versions.	

GDD Report

The content of the DebitCreditAdviceLineItemDetail class, its structure and component definitions can be accessed in the Global Data Dictionary: http://apps.gs1.org/GDD/bms/Version3_4/Pages/bieDetails.aspx?semanticURN=urn:gs1:gdd:bie:DebitCreditAdviceLineItemDetail.

Content	Attribute / Role	Datatype /Secondary class	Multiplicity	Definition	Requirements
DebitCreditAdviceLineItemDetail				Allows a sender to provide information of multiple adjustments to a line item from the same referenced document.	
Association		Ecom_TradeItemIdentification	1..1	Identification of the trade item to which the debit credit advice line detail information applies.	



Content	Attribute / Role	Datatype /Secondary class	Multiplicity	Definition	Requirements
Attribute	alignedPrice	Amount	0..1	Price expressed as a monetary value. Through alignment between parties, this price has been previously agreed to.	
Attribute	invoicedPrice	Amount	0..1	Monetary value of the item or service noted on the invoice.	
Attribute	quantity	Quantity	0..1	Number of units of a product or service.	
Attribute	avpList	Ecom_AttributeValuePairList	0..1	Temporary attributes introduced between minor versions.	



Note: Reference Shared Common Library Business Message (BMS) Release 3.4 and eCom Domain Common Library Business Message (BMS) Release 3.4 for all common information.

4.3 Enumerations (message specific)

4.3.1 ClaimsNotificationTypeEnumeration

CodeValue	Description
CREDIT	The deduction of a payment made by a debtor from an amount due. The right-hand side of an account on which such amounts are entered.
DEBIT	An accounting entry acknowledging sums that are owing The left-hand side of an account on which such entries are made opposite a credit.

4.4 Code Lists

Class	Codelist	GDD Link
DebitCreditAdvice LineItem	FinancialAdjustmentReasonCode	http://apps.gs1.org/GDD/Pages/clDetails.aspx?semanticURN=urn:gs1:gdd:cl:FinancialAdjustmentReasonCode



Note: Refer to the Global Data Dictionary (GDD) for the code values.

5 Business Message Examples

This is an example of a Debit Credit Advice message.

Party Information

GS1 Global Location Number	Party Type
5412345000013	Buyer
4098765000010	Seller

The message is sent on April 13th at 11 AM. The message is identified with the unique identifier number CR03001 and is initiated by the Buyer.

The credit advice is sent by the Buyer (GLN 5412345000013) to the Seller (GLN 4098765000010).

In this example, it is a credit advice for 100.00. The Buyer advises that the goods have already been taken by a seller's Sales Representative, so an adjustment for credit for the buyer for 100.00 is required.

Attribute	Value
Debit Credit Advice	
debitCreditIndicatorCode	CREDIT
totalAmount	100 EUR
additionalDebitCreditInstruction	Faulty products taken by Sales Representative
creationDateTime	2005-04-13 11:00
documentStatusCode	ORIGINAL
Entity Identification (+debitCreditAdviceIdentification)	
entityIdentification	CR03001
Party Identification (+contentOwner)	
gln	5412345000013
TransactionalParty (+buyer)	
- gln	5412345000013
TransactionalParty (+seller)	
- gln	4098765000010
DebitCreditAdviceLineItem	
lineItemNumber	1
adjustmentAmount	100.00 EUR
debitCreditIndicatorCode	CREDIT
financialAdjustmentReasonCode	17
TransactionalReference	
entityIdentification	RA20051
creationDate	2011-04-13 11:45
lineItemNumber	1
transactionalReferenceTypeCode	ALO
DebitCreditAdviceLineItemDetail	
quantity	10
TradeItemIdentification	
gtin	40987650000223

6 Implementation Considerations

6.1 User Guide

The Functional User Guide contains more information about the structure and content of the Debit Credit Advice message: http://www.gs1.org/docs/ecom/xml/3/3.4/eCom-Trade_messages.html#DebitCreditAdvice

6.2 Message Specific Considerations

Not Applicable

7 Summary of Changes

Any change in the GS1 standards is done based on the Work Request (WR) submitted by the GS1 User Companies or Member Organisations. All Work Requests are documented in the Work Request system available on the GS1 website: <http://wr.gs1.org>. The system is accessible to registered users. New visitors need to register first, to be able to access it. WRs can be searched by the number referenced in tables below, see: Search Work Requests. The number starts with the two last digits of the year when it was submitted, followed by the consecutive number within that year.



Note: WRs submitted earlier than February 2012 should be searched in Old Change Requests.

7.1 BMS Release 3.0

Change	Associated CR Number
For BMS Release 3.0.0: Updated to reflect changes in modelling methodology.	Not Applicable

7.2 BMS Release 3.1

No work requests. Indirect changes due to upgrade to new Shared and eCom Common libraries.

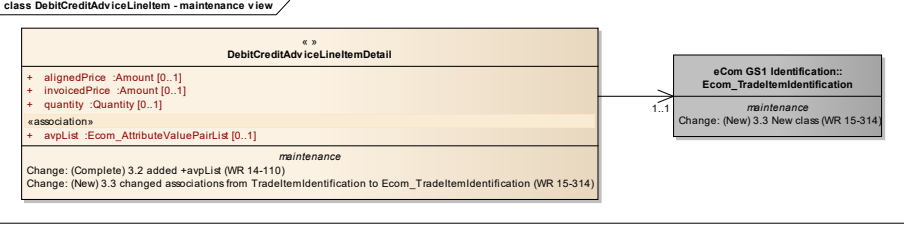
7.3 BMS Release 3.2

Change	Associated WR
<div style="border: 1px solid black; padding: 5px;"> <p>class DebitCreditAdvice - maintenance view</p> <pre> «root, » DebitCreditAdvice + additionalDebitCreditInstruction: Description1000 [0..1] « » + debitCreditIndicatorCode: DebitCreditEnumeration + totalAmount: Amount maintenance Change: (Verified) 3.2 changed generalisation from Document to eComDocument class to include AVP (WR 14-110) </pre> </div>	<p>14-000110</p> <p>Add Attribute Value Pair at the root, line item and sub line item levels</p>

Change	Associated WR
<p>class DebitCreditAdviceLineItem - maintenance view</p> <pre> classDiagram class DebitCreditAdviceLineItem { + lineItemNumber: positiveInteger + adjustmentAmount: Amount + debitCreditIndicatorCode: DebitCreditEnumeration + financialAdjustmentReasonCode: FinancialAdjustmentReasonCode + additionalDebitCreditLineInstruction: Description1000 [0..1] + parentLineItemNumber: positiveInteger [0..1] <<association>> + avpList: Ecom_AttributeValuePairList [0..1] } </pre> <p style="text-align: center;"><i>maintenance</i></p> <p>Change: (Verified) 3.2 added +avpList (WR 14-110) Change: (Verified) 3.2 added +parentLineItemNumber (WR 14-021 & 14-044)</p>	<p>14-000110 Add Attribute Value Pair at the root, line item and sub line item levels</p> <p>14-000021 & 14-000044 Add a reference to parent line number to all LineItem classes, to support hierarchical items.</p>
<p>class DebitCreditAdviceLineItemDetail - maintenanc...</p> <pre> classDiagram class DebitCreditAdviceLineItemDetail { + alignedPrice: Amount [0..1] + invoicedPrice: Amount [0..1] + quantity: Quantity [0..1] <<association>> + avpList: Ecom_AttributeValuePairList [0..1] } </pre> <p style="text-align: center;"><i>maintenance</i></p> <p>Change: (Verified) 3.2 added +avpList (WR 14-110)</p>	<p>14-000110 Add Attribute Value Pair at the root, line item and sub line item levels</p>

7.4 BMS Release 3.3

Change	Associated WR
<p>Created Ecom_EntityIdentification class and changed association from the previous EntityIdentification</p> <pre> classDiagram class DebitCreditAdvice { <<root, >> + additionalDebitCreditInstruction :Description1000 [0..1] << >> + debitCreditIndicatorCode :DebitCreditEnumeration + totalAmount :Amount } class Ecom_EntityIdentification { <<association>> } DebitCreditAdvice --> "1..1" Ecom_EntityIdentification : +debitCreditAdviceIdentification </pre> <p style="text-align: center;"><i>maintenance</i></p> <p>Change: (Complete) 3.2 changed generalisation from Document to eComDocument class to include AVP (WR 14-110) Change: (New) 3.3 changed association from EntityIdentification to Ecom_EntityIdentification (WR 15-314)</p>	<p>15-000314 Make GS1 identification keys optional in GS1 EDI XML</p>

Change	Associated WR
<p>Created Ecom_TradeItemIdentification class and changed association from the previous TradeItemIdentification</p> 	<p>15-000314 Make GS1 identification keys optional in GS1 EDI XML</p>

7.5 BMS Release 3.4

No work requests. Indirect changes due to upgrade to new Shared and eCom Common libraries.

7.6 BMS Release 3.4.1

No work requests. Indirect changes due to upgrade to new Shared and eCom Common libraries.

8 Appendices

Not Applicable

9 Acknowledgements

9.1 Work Group

Function	Name	Company / organisation
Co-chair	Rossner (Pottier), Natascha	GS1 France
Co-chair	Schmidt, Tom Eric	August Storck KG
Member	Bemrose, Jonathan	R&R Ice Cream
Member	Bodemer, Petra	dm-drogerie markt GmbH + Co. KG
Member	Boikanyo, Rebone	GS1 South Africa / Consumer Goods Council of South Africa
Member	Canada, ON	M3B 3L1
Member	Carlson, Jim	General Mills, Inc.
Member	Chresta, Richard	GS1 Switzerland
Member	Cook, Don	Wal-Mart Stores, Inc.
Member	Cox, Marc	Philips Electronics N.V.
Member	Darnell, David	Systrends
Member	De Flou, Nele	GS1 Belgium & Luxembourg
Member	Dicks, Arne	GS1 Germany
Member	Duvinger, Karina	GS1 Sweden
Member	Foerderer, Klaus	GS1 Germany
Member	Gathmann, Stefan	GS1 Ireland
Member	Grangard, Anders	GS1 Global Office

Function	Name	Company / organisation
Member	Harpell, Eileen	GS1 Community Room Staff
Member	Hand, Phil	JDA Software
Member	Herregodts, Kurt	GS1 Belgium & Luxembourg
Member	Kempkes, Fred	Unilever N.V.
Member	Kernan, Brendan	GS1 Ireland
Member	Kidd, Robin	Nestle
Member	Krid, Anne-Claire	GS1 France
Member	Lanoue, Tom	General Mills, Inc.
Member	Laur, Rita	GS1 Canada
Member	Lenman, Mia	GS1 Sweden
Member	Lerch, Hanjoerg	METRO Group
Member	Moberg, Dale	Axway
Member	Montes de Oca, Alejandra	GS1 Mexico
Member	Ng, Ella	GS1 Australia
Member	Peelen, Esther	GS1 Netherlands
Member	Pelekies, Andreas	GS1 Germany
Member	Perrier, Patricia	GS1 France
Member	Przybilla, Christian	GS1 Germany
Member	Pujol, Xavier	GS1 Spain
Member	Racek, Greg	Wal-Mart Stores, Inc.
Member	Repetto, Mirko	GS1 Italy
Member	Robba, Steven	1WorldSync Holdings, Inc.
Member	Rosell, Pere	GS1 Spain
Member	Rosenberg, Steven	GS1 US
Member	Schmid, Sue	GS1 Australia
Member	Schneider, Christian	GS1 Switzerland
Member	Sehorz, Eugen	GS1 Austria
Member	Sharma, Vishal	General Mills, Inc.
Member	Shimazaki, Ayako	GS1 Japan
Member	Sion, Emilie	GS1 France
Member	Souza, Nadia	GS1 Brasil
Member	Strand, Roman	GS1 Germany
Member	Tan, Milton	GS1 Malaysia
Member	Tompsett, Simon	Waitrose
Member	Trelle, Ute	1WorldSync Holdings, Inc.
Member	Tse, Steve	GS1 Hong Kong
Member	Tyson, Betty	Knouse Foods Cooperative, Inc
Member	Van den Bergh, Senne	GS1 Belgium & Luxembourg
Member	Van der Eijk, Pim	OASIS - Sonnenglanz Consulting BV
Member	Veldhuis, Saskia	Procter & Gamble Co.
Member	Welch, Shan	GS1 UK

Function	Name	Company / organisation
Member	Westerkamp, Jan	GS1 Netherlands
Member	Wilson, Mary	GS1 US
Member	Windsperger, Bekki	Best Buy Co., Inc.
Member	Yang, Shaopeng	GS1 China
Member	Yusdiar, Dani	GS1 Indonesia
Member	Zwanziger, Greg	SUPERVALU

9.2 Development Team Members

Function	Name	Organisation
GSMP Process Lead	Jean-Luc Champion and Tasha Wiehe	GS1 Global Office
Technical Development Lead	Ewa Iwicka	GS1 Global Office
Peer Review	Mark Van Eeghem	GS1 Global Office